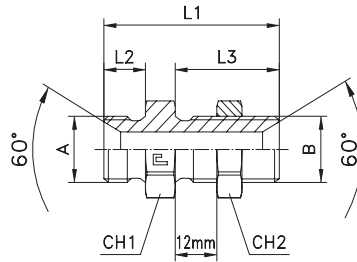


MALE BULKHEAD ADAPTOR230

Thread BSP Parallel

Type: 3005..-ATT



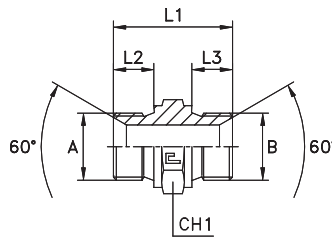
Serie BS	30.... [bar]	31.... [bar]	Ordering Complete	A	B	L1	L2	L3	CH1	CH2
UNIVERSAL	400	400	300501-ATT	1/8	1/8	41	8	28	14	14
			300504-ATT	1/4	1/4	46	11	28	19	19
			300508-ATT	3/8	3/8	52	12	32	22	22
	350	350	300511-ATT	1/2	1/2	59	14	35	27	27
	315	315	300518-ATT	3/4	3/4	66	16	38	32	32
	250	250	300522-ATT	1	1	75	19	41	41	41
	200	200	300526-ATT	1 1/4	1 1/4	83	20	44	50	50
	160	160	300529-ATT	1 1/2	1 1/2	93	22	48	55	55
	125	125	300531-ATT	2	2	102	25	48	70	70

Notes: If you wish to order a fitting in stainless steel, please change the first two digit from 30.... to 31....
Articles available on scheduled orders only.
For copper washer sealing systems refer to items 3001.. pressure rates

MALE STRAIGHT ADAPTER

Thread Metric Parallel

Type: 3006..



Series BS	30.... [bar]	31.... [bar]	Ordering Complete	A	B	L1	L2	L3	CH1
UNIVERSAL	400	400	300601	10x1	10x1	24	8	8	14
			300602	12x1,5	12x1,5	34	12	12	17
			300603	12x1,5	14x1,5	34	12	12	19
			300604	14x1,5	14x1,5	34	12	12	19
			300605	14x1,5	16x1,5	34	12	12	22
			300606	14x1,5	18x1,5	35,5	12	12	24
	350	350	300607	14x1,5	22x1,5	38	12	14	27
	400	400	300608	16x1,5	16x1,5	34	12	12	22
			300609	16x1,5	18x1,5	35,5	12	12	24
	350	350	300610	16x1,5	20x1,5	37,5	12	14	27
			300611	16x1,5	22x1,5	38	12	14	27
	400	400	300612	18x1,5	18x1,5	36	12	12	24
	350	350	300613	18x1,5	20x1,5	38	12	14	27
			300614	20x1,5	20x1,5	40,5	14	14	27
			300615	20x1,5	22x1,5	41	14	14	27
			300616	22x1,5	22x1,5	41	14	14	27
	315	315	300617	22x1,5	26x1,5	45	14	16	32
			300618	26x1,5	26x1,5	47	16	16	32
	250	250	300619	26x1,5	30x1,5	48	16	16	36
			300620	30x1,5	30x1,5	48	16	16	36
	200	200	300621	30x1,5	38x1,5	50	16	16	46
			300622	38x1,5	38x1,5	50	16	16	46
	160	160	300623	38x1,5	45x1,5	52	16	16	55
			300624	45x1,5	45x1,5	52	16	16	55

Notes: If you wish to order a fitting in stainless steel, please change the first two digit from 30.... to 31....
Articles available on scheduled orders only.
For copper washer sealing systems refer to items 3001.. pressure rates